

ROYAL VIT G

MULTIVITAMINS & MINERALS CAPSULES

A very potent multivitamin & mineral preparation which is supplemented with pollen, ginseng royal jelly & di-methyl-amino-ethanol.

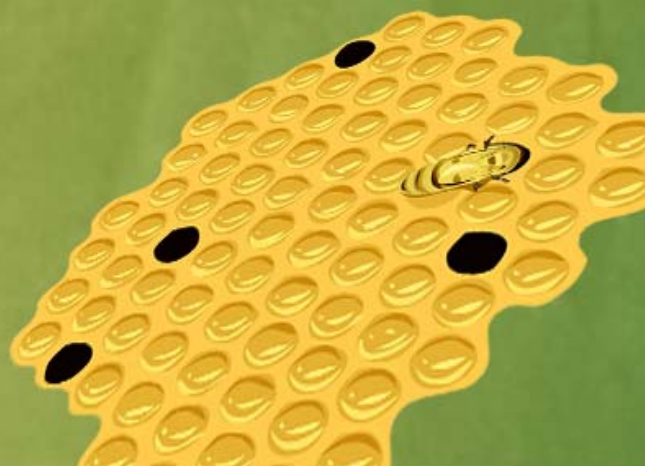
Highly concentrated standardized Ginseng = 40 mg equivalent to 200 mg of genuine Panax Ginseng root

Royal Jelly Lyophilized = 33.3 mg equivalent to 100 mg of fresh Royal Jelly

Dimethyl-aminoethanol Bitartrate	25 mg
Pollen	50mg
Vitamin A	2000 I.U
Calcium	90 mg
Phosphorous	60 mg
Copper	1 mg
Potassium	2 mg
Manganese	1 mg
Zinc	1 mg
L- Lysine	5 mg
Biotin	3 mcg
Soya-Lecithin	32 mg

Calcium Pantothenate	4 mg
Iron	10 mg
PABA	50 mg
Vitamin B1	15 mg
Vitamin B2	4 mg
Vitamin B 6	1 mg
Vitamin B 12	5 mcg
Vitamin D	200 I.U
Vitamin E	30 I.U
Nicotinamide	15 mg
Folic Acid	25 mcg

- Royal Jelly
- Ginseng
- Di-methyl-amino-ethanol
- Can Royal Vit G Be Used With Diabetic Patients?
- What is the role of Royal Vit G in Erectile Dysfunction?
- What are the other usages of Royal Vit G?



ROYAL VIT G

MULTIVITAMINS & MINERALS CAPSULES

Royal Jelly

Known as *gelee royale* and *RJ*, is the milky-white gelatinous substance secreted from the cephalic glands of nurse worker bees (*Apis mellifera*) for apparently the sole purpose of stimulating the growth and development of the queen bee. Without royal jelly, the queen bee would be no different from the worker bees and would live about as long (seven to eight weeks). With royal jelly, the queen bee can live five to seven years. This fact explains the popular belief that royal jelly has rejuvenating qualities.

Royal jelly consists of an emulsion of proteins, sugars, lipids and some other substances in a water base. Proteins make up about 13% of royal jelly. Most of the proteins comprise a family called major royal jelly proteins.

One protein in royal jelly called royalsin possesses antibiotic properties against gram-positive, but not gram-negative, bacteria. About 11% of royal jelly is made up of sugars, such as fructose and glucose, similar to those found in honey. Lipids comprise about 5% of the substance and consist mainly of medium-chain hydroxyl- fatty acids, such as trans-10-hydroxy-2-decenoic acid, which is also thought to possess antimicrobial properties.

Royal jelly also contains vitamins, such as pantothenic acid, minerals and phytosterols. Neopterin, or 2-amino-6-(1,2,3-trihydroxypropyl)-4 (3H)-pteridinone, was initially isolated from royal jelly. Neopterin is also found in humans, and, although its precise role is not known, it appears to play an important role in the human immune system.

Melbrosia, a mixture of royal jelly and bee pollen, is sometimes used by menopausal women to manage climacteric symptoms.

Ginseng

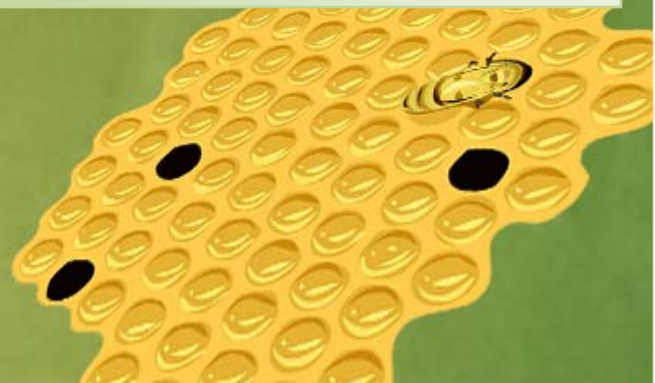
Ginseng root is native to eastern Asia and North America, and has been in use as a folk medicine and tonic amongst the peoples of China, Korea, Thailand, Viet Nam and Manchuria, as well as amongst Native Americans, for untold thousands of years. Frequently used as a potent preventative rather than a curative, it has also demonstrated tremendous therapeutic benefits for a wide number of conditions. If taken regularly it increases vitality, and can extend your life span.

A perennial plant, ginseng is often found in heavily wooded areas and requires rich soil to thrive. Ginseng takes several years to mature, with most roots cultivated when the plant is between 3-10 years old.

After too many years the plant and its root can begin to degenerate, and the root may become pitted and wooden.

The plant itself is very attractive, with well shaped green leaves and bright red berries; however it is only the root that has any medicinal value. Its original name means *Man Root*, due to the shape of the ginseng root which strongly resembles the form of a human body.

Ginseng is a member of the *Araliaceae* family. The American ginseng plant, *Panax Quinquefolius*, has become in such high demand in Asia that more than 85% of American grown ginseng is exported to asian markets.



ROYAL VIT G

MULTIVITAMINS & MINERALS CAPSULES

Dimethylaminoethanol

DMAE is really one of the classic Smart Nutrients. It was discussed in the original Smart Drugs & Nutrients book. DMAE is an ingredient in some foods including anchovies.

Enhances "vigilance" (roughly translated, this means it makes you more alert and responsive to your environment and increases "presence of mind".) Elevates mood and learning. Improves memory. Increases intelligence. Extends the lifespan of laboratory animals.

Increase physical energy. Provides a mild, safe tonic effect. Makes it easier for most people to get to sleep.

Enhances lucid dreams Decreases fatigue in the day while providing for sounder sleep at night.

Reduces the need for sleep. Treatment for hyperactivity in children. Anti-aging effects.

www.sedico.net

Can Royal Vit G be used with diabetic patients?

Royal Vit G capsules can be used in diabetic patients type 2 since the Panax Ginseng presents in the Royal Vit G capsule:

- ▶ *Increases the rate of glucose disposal at 30, 60 and 120 minutes*
- ▶ *Improves hemoglobin A1C values.*

What is the role of Royal Vit G in Erectile Dysfunction?

Royal Vit G with its unique combination:

- ▶ *Improves erectile dysfunction*
- ▶ *Improves sexual desire*

What are the other usages of Royal Vit G?

Royal Vit G with its combination of biotonics, vitamins and Minerals is highly effective in:

- ▶ *Fatigue and exhaustion*
- ▶ *Physical and mental vitality*
- ▶ *Mood elevation and well being*
- ▶ *Improves concentration and memory*
- ▶ *Convalescence and post-operative*
- ▶ *Dystrophy of skin, nails and hair*
- ▶ *Menstrual needs*
- ▶ *Senile Cachexia*



ESSENTIAL FOR LIFE